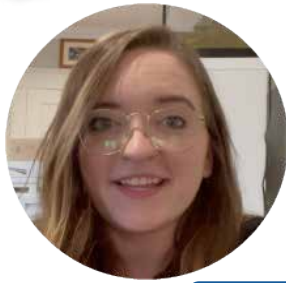




# Success at Shiloh Elementary Gwinnett County Public Schools

Case Study



**Rachel Engwall**  
Special Education Teacher



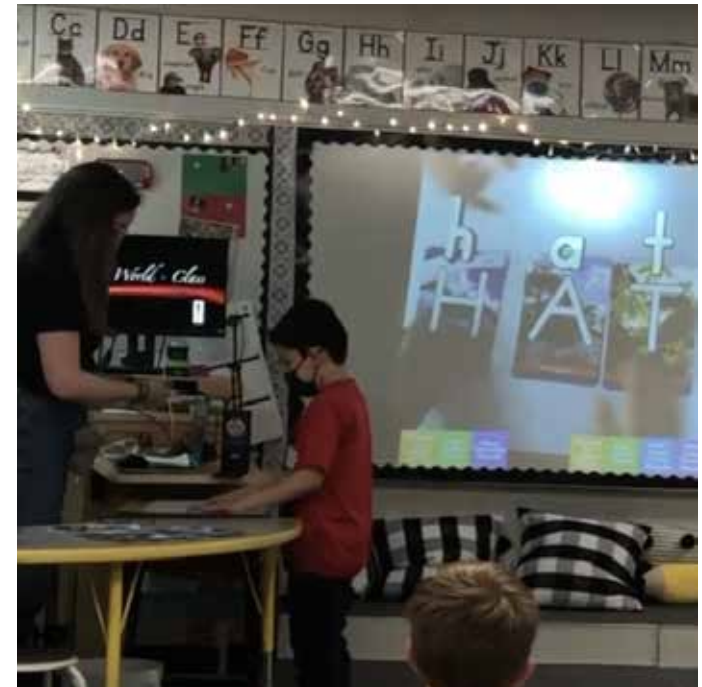
A successful case study of Alive Studios working in the **Special Education Program in GCPS.**

### Details of Study

- Special Education Program
- Self-contained classroom
- 14 1st grade students
- Level-range: PK to 1st
- Whole group and individual
- 30-Day study

### Results from a Special Education Classroom after using Letters alive® Zoo Keeper for 30 days.

	Known before using Letters alive®	Known after using Letters alive®
CVC Words	23%	65%
CVCe Words	0%	65%
Sight Words	45%	73%



*"My students went from 0% to 65% Mastery of CVCe words!*

*I had to completely redo their IEP Goals!"*

*~ Rachel Engwall*



**1. Tell us about the students who were in this case study.**

*Answer: The students were in special education self-contained first grade. Their levels ranged from pre-k to first.*

**2. How did you use Alive Studios' resources with the children?**

*Answer: I followed the provided Zoo Keeper Lesson Plans for whole group instruction, and I made individual visual models of CVC words as necessary.*

**3. What are the ELA Skills that you measured with your students to prove success in this Study?**

*Answer: CVC words, letter recognition, letter-sound recognition, sight words. (Whatever needed to be addressed in their IEP goals and objectives)*

**4. Overall, how did you and the students like Alive Studios' supplemental resources?**

*Answer: The kids loved them as much as I did! It was so much fun.*

**5. What was your favorite aspect of the program? What were your students' favorites?**

*Answer: My students and I loved how interactive it was. Also, "asking" the animals questions and watching them respond..*

**6. Why do you think the program was so successful for your learners?**

*Answer: My kids were so engaged and excited that it actually kept their attention longer than other lessons I have taught.*

